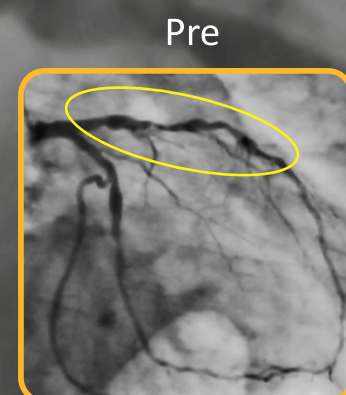
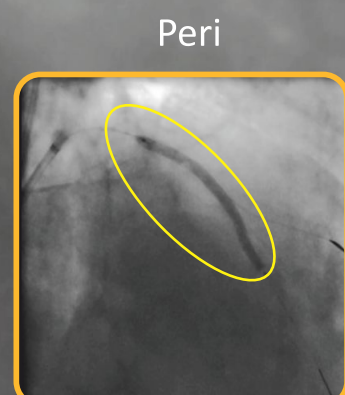


BioMime 48 mm long, also available!

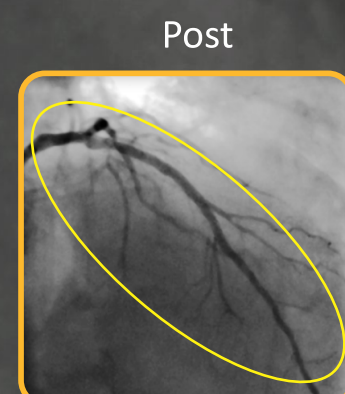
Master LIVE Case demonstrated by **Dr. Farrel Hellig**,
Sunninghill and Sunward Hospital, South Africa during **EuroPCR 2013**



Pre
LCA shows a long lesion of LAD
and diffused disease in LCx



Peri
Excellent trackability and conformability
of BioMime 2.75 x 48 mm



Post
Post dilated proximally to
achieve excellent final result

Angiographic images reproduced with approval from Dr. Farrel Hellig

Available in 75 sizes-
Diameters (mm) : 2.00, 2.25, 2.50, 2.75, 3.00, 3.50, 4.00, 4.50
Lengths (mm) : 8, 13, 16, 19, 24, 29, 32, 37, 40, 44, 48

BIOMIME™ TECHNICAL SPECIFICATIONS

STENT
Stent Material : Cobalt Chromium L605
Strut Thickness : 65 µm (0.065 mm or 0.0026")
Stent Diameters (mm) : 2.00, 2.25, 2.50, 2.75, 3.00, 3.50, 4.00, 4.50
Stent Lengths (mm) : 8, 13, 16, 19, 24, 29, 32, 37, 40, 44, 48
Mean Recoil : 3%
Mean Foreshortening : 0.29%

DRUG / POLYMER
Drug : Sirolimus
Equivalent Drug Dose : 1.25 µg / mm²
Polymer : Biodegradable and Biocompatible

DELIVERY SYSTEM
Delivery System : Rapid Exchange
Stent Diameter : Crossing Profile
mm / inches
2.00 0.83 mm / 0.033"
2.25 0.85 mm / 0.033"
2.50 0.91 mm / 0.036"
2.75 0.98 mm / 0.039"
3.00 0.99 mm / 0.039"
3.50 1.06 mm / 0.042"
4.00 1.16 mm / 0.046"
4.50 1.19 mm / 0.047"
Nominal Pressure : 9 atm
Rated Burst Pressure : 14 / 16 atm depending upon size and length of stent
(Refer IFU for more details)
Balloon Overhang : < 0.5 mm
Shaft Outer Diameter : Proximal 1.95-1.98 F (2.13 F for stent length 44 mm, 48 mm)
Distal 2.7 F (2.4 F for diameter 2.00 mm)
Radiopaque Markers : 2 - Platinum / Iridium
Usable Catheter Length : 140-142 cm
Guide Catheter Compatibility : 5 F (Min. I. D. 0.056" / 1.42 mm)
Max. Guide Wire : 0.014" (0.36 mm)

BIOMIME™ STENT ORDERING INFORMATION

Dia / Length	8 mm	13 mm	16 mm	19 mm	24 mm	29 mm
2.00 mm	-	BIO20013	BIO20016	BIO20019	BIO20024	-
2.25 mm	BIO22508	BIO22513	BIO22516	BIO22519	BIO22524	BIO22529
2.50 mm	BIO25008	BIO25013	BIO25016	BIO25019	BIO25024	BIO25029
2.75 mm	BIO27508	BIO27513	BIO27516	BIO27519	BIO27524	BIO27529
3.00 mm	BIO30008	BIO30013	BIO30016	BIO30019	BIO30024	BIO30029
3.50 mm	BIO35008	BIO35013	BIO35016	BIO35019	BIO35024	BIO35029
4.00 mm	BIO40008	BIO40013	BIO40016	BIO40019	BIO40024	BIO40029
4.50 mm	BIO45008	BIO45013	BIO45016	BIO45019	BIO45024	BIO45029
Dia / Length	32 mm	37 mm	40 mm	44 mm	48 mm	
2.00 mm	-	-	-	-	-	
2.25 mm	BIO22532	BIO22537	BIO22540	-	-	
2.50 mm	BIO25032	BIO25037	BIO25040	BIO25044	BIO25048	
2.75 mm	BIO27532	BIO27537	BIO27540	BIO27544	BIO27548	
3.00 mm	BIO30032	BIO30037	BIO30040	BIO30044	BIO30048	
3.50 mm	BIO35032	BIO35037	BIO35040	BIO35044	BIO35048	
4.00 mm	BIO40032	BIO40037	BIO40040	-	-	
4.50 mm	BIO45032	BIO45037	BIO45040	-	-	



Meril Life Sciences Pvt. Ltd.
Survey No. 135/139, Bilakhia House,
Muktanand Marg, Chala,
Vapi 396 191,
Gujarat, India.
T +91 260 305 2100
F +91 260 305 2125

Meril, Inc.
116, Village Boulevard, Suite 200,
Princeton, NJ 08540, USA.
T +1 609 951 2287
F +1 609 520 1702

Meril South America
Doc Med LTDA
Al. dos Tupiniquins,
1079 - Cep. 04077-003 - Moema,
Sao Paulo, Brazil.
T +55 11 3624 5935
F +55 11 3624 5936

Meril GmbH.
Bornheimer Strasse 135-137,
D-53119 Bonn,
Germany.
T +49 228 7100 4000
F +49 228 7100 4001

Meril Tıbbi Cihazlar
İmalat Ve Ticaret A. Ş.
8. Mimar sinan Mah.
Çavuşbasi Cad. Özde Sok.
Aydin Eksi Is Merkezi Kat:1
Cekmekoy/Istanbul, Turkey.
T +90 53 2272 5172

E askinfo@merilife.com
W www.merilife.com

EU Representative.
Obelis S. A.
Bd, General Wahis 53,
1030, Brussels, Belgium.
T +32 2 732 5954
F +32 2 732 6003
E mail@obelis.net



BioMime™ is a registered trademark of
Meril Life Sciences Pvt. Ltd.

biomime™
Sirolimus Eluting Coronary Stent System

Meril

biomime™
Sirolimus Eluting Coronary Stent System

BIO/BROCHURE/008/MLS/2010/0802/IND



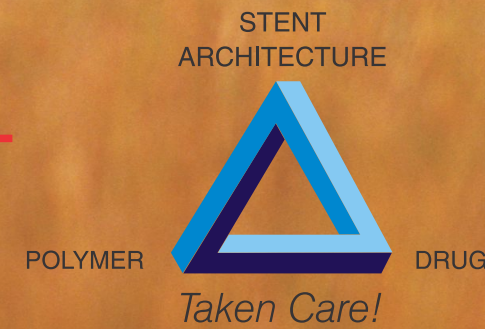
biomime™

Sirolimus Eluting Coronary Stent System

Mimes so well, you can't tell.

Also available in
 Ø 2.00 & 2.25
 &
 / 44 & 48 mm

In BioMime™, the polarized triad of DES design is taken care of!



The resultant stent blends the Safety of a BMS with efficiency of DES

merit-II¹ Complex, Real World Study

N = 250, Prospective, Non-Randomized, Multi-Centre Study
 Stent diameters - 2.50, 2.75, 3.00, 3.50 mm
 Stent lengths - 13, 16, 19, 24, 29, 32, 37, 40 mm

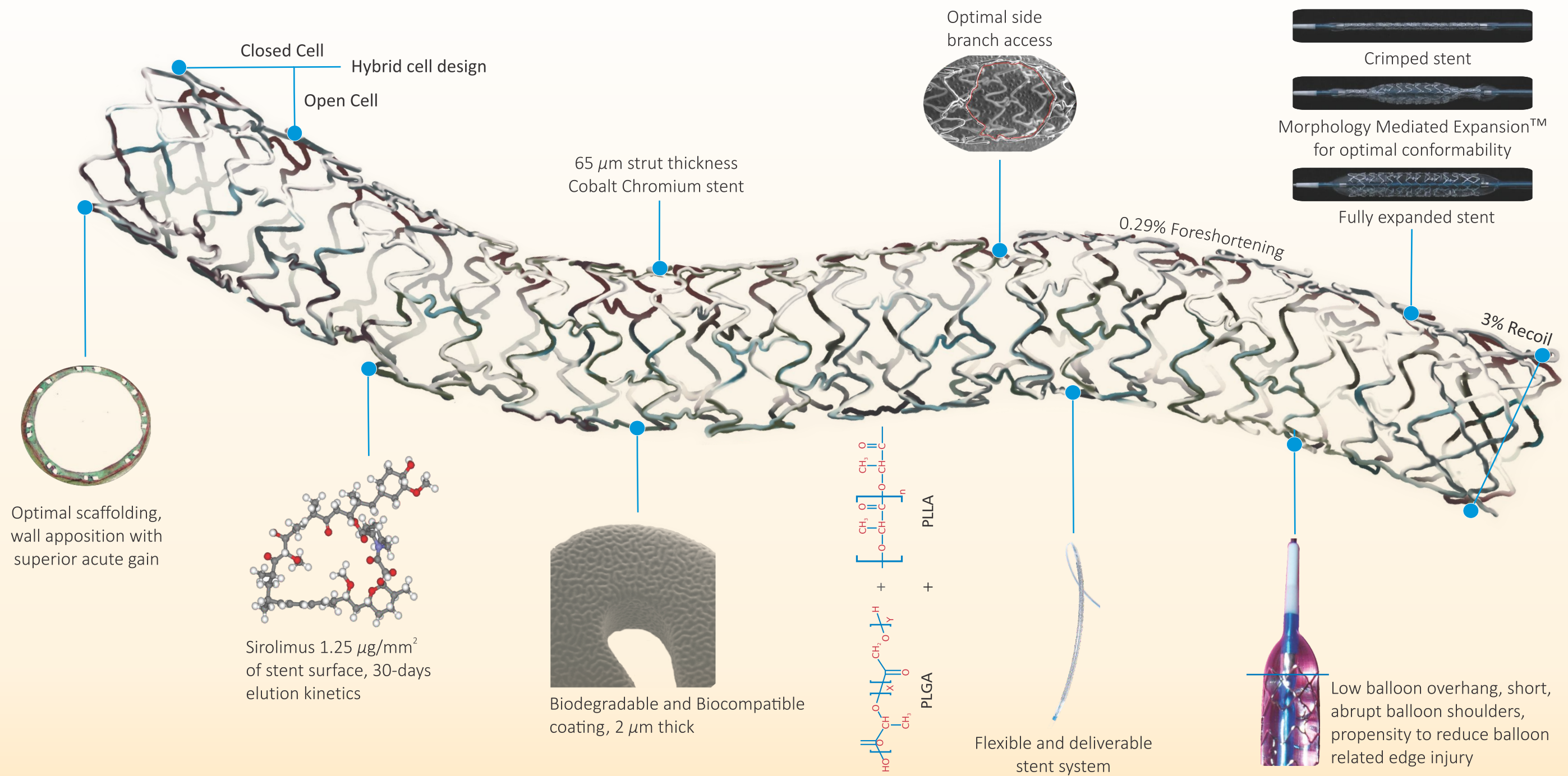
Primary Demographics – Treatment Influencing Factors

Diabetics 36%; Hypertensive 49%; Smokers 28%

Results at 1 year

High Safety	High Efficacy
<ul style="list-style-type: none"> A low MACE at 6.0% 0.8% Stent Thrombosis 	<ul style="list-style-type: none"> 0.12 mm in-stent late lumen loss 6.2% binary restenosis at 8 months QCA

1. Data Presented by Dr. Ashok Seth during EuroPCR 2013



Low balloon overhang, short, abrupt balloon shoulders, propensity to reduce balloon related edge injury