

## BIOMIME™ MORPH TECHNICAL SPECIFICATIONS

### STENT

Stent Material	: Cobalt Chromium L605
Strut Thickness	: 65 µm (0.065 mm or 0.0026")
Stent Diameters (mm)	: 2.75-2.25, 3.00-2.50, 3.50-2.75, 3.50-3.00
Stent Lengths (mm)	: 30, 40, 50, 60
Mean Recoil	: <3%
Mean Foreshortening	: 0.29%

### DRUG / POLYMER

Drug	: Sirolimus
Equivalent Drug Dose	: 1.25 µg / mm <sup>2</sup>
Polymer	: BioPoly™ (Biodegradable + Biocompatible)

### DELIVERY SYSTEM

Delivery System	: Rapid Exchange
Stent Diameter	: Crossing Profile
mm	mm / inches
2.75-2.25	0.93 mm / 0.037"
3.00-2.50	0.99 mm / 0.039"
3.50-2.75	1.03 mm / 0.041"
3.50-3.00	1.03 mm / 0.041"
Nominal Pressure (NP)	: 9 ATM
Rated Burst Pressure (RBP)	: 14 ATM
Balloon Overhang	: < 0.5 mm
Shaft Outer Diameter	: Proximal 2.13 F, Distal 2.7 F
Radiopaque Markers	: 2 – Platinum / Iridium
Usable Catheter Length	: 142 cm
Guide Catheter Compatibility	: 5 F ( Min. I. D. 1.42 mm / 0.056" )
Max. Guide Wire	: 0.014" (0.36 mm)

## BIOMIME™ MORPH STENT ORDERING INFORMATION

### Available Diameters

### Available Lengths

Proximal - Distal	30 mm	40 mm
2.75 - 2.25 mm	BIM27522530	BIM27522540
3.00 - 2.50 mm	BIM30025030	BIM30025040
3.50 - 2.75 mm	BIM35027530	BIM35027540
3.50 - 3.00 mm	BIM35030030	BIM35030040
Proximal - Distal	50 mm	60 mm
2.75 - 2.25 mm	BIM27522550	BIM27522560
3.00 - 2.50 mm	BIM30025050	BIM30025060
3.50 - 2.75 mm	BIM35027550	BIM35027560
3.50 - 3.00 mm	BIM35030050	BIM35030060



More to Life

**Meril Life Sciences Pvt. Ltd.**  
Survey No. 135/139, Bilakhia House,  
Muktanand Marg, Chala,  
Vapi 396 191. Gujarat. India.  
**T** +91 260 305 2100  
**F** +91 260 305 2125

**Meril GmbH**  
Bornheimer Strasse 135-137,  
D-53119 Bonn. Germany.  
**T** +49 228 7100 4000  
**F** +49 228 7100 4001

**Meril South America**  
Doc Med LTDA.  
Al. dos Tupiniquins,  
1079 – Cep: 04077-003 – Moema.  
Sao Paulo. Brazil.  
**T** +55 11 3624 5935  
**F** +55 11 3624 5936

**E** askinfo@merillife.com  
**W** www.merillife.com

BioMime™ Morph is a registered trademark of Meril Life Sciences Pvt. Ltd.

BIM/BROCHURE/001/MIS/20131119/IND

# biomime™ morph

## Sirolimus Eluting Coronary Stent System

Meril

More to Life

# biomime™ morph

## Sirolimus Eluting Coronary Stent System

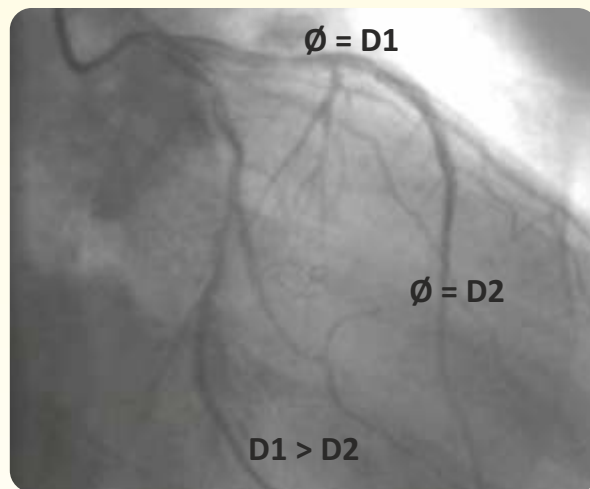
**Morphs so well, you can tell.**

# biomime™ morph

## Sirolimus Eluting Coronary Stent System

### Morphs so well, you can tell.

This angio is routine...



& now, so is its customized treatment...

- A DES that tapers as per vessel anatomy
- Avoids overlapping – thus fracture & restenosis
- Possible to treat long diffused lesions with a single stent – one and done
- Reduced procedural time
- Prevents over radiation and contrast
- Saves cost – less \$ than multiple tandem stents

